

AC-MX1616-AUHD-HDBT

4K60 18GBPS MATRIX SWITCHER WITH 16 HDMI INPUTS AND 16 HDBASET OUTPUTS

QUICK START GUIDE

THE AC-MX1616-AUHD-HDBT IS A 16 INPUT/OUTPUT MATRIX SWITCH BUILT TO HANDLE ALL THE LATEST SOURCES OUTPUTTING 4K 60 (4:4:4) HDR VIDEO SIGNALS. WHAT TRULY MAKES THIS SWITCH THE CHOICE OF INTEGRATORS AROUND THE WORLD IS THE ABILITY TO DISTRIBUTE 18GBPS 4K TO SOME ZONES AND 1080P TO OTHERS. WE ARE ABLE TO ACCOMPLISH THIS WITH OUR BUILT IN 4K TO 1080P DOWNSCALERS. THIS FEATURE IS ONE OF MANY DESIGNED TO HELP INTEGRATORS THROUGHOUT THE INSTALLATION PROCESS.



THIS QUICK START GUIDE WILL BE GOING THROUGH:

- INSTALL
- FRONT PANNEL CONTROL
- SWITCHING
- EDID MANAGEMENT
- NETWORK SETTINGS
- TROUBLESHOOTING

INSTALLATION

- 1.CONNECT THE HDMI INPUT SOURCES (BLU-RAY, SET TOP BOX, ETC...) TO THE AC-MX1616-AUHD
- 2.CONNECT THE HDMI OUTPUT DEVICES (DISPLAY, DISTRIBUTION AMPLIFIER, EXTENDER) TO THE AC-MX1616-AUHD
- 3.POWER ON THE SOURCES
- 4.CONNECT THE POWER SUPPLY'S INTO THE AC-MX1616-AUHD(YOU NEED TO PLUG IN BOTH SUPPLY'S)
- 5.TURN ON OUTPUT DEVICES/DISPLAYS6.YOU MAY NOW USE THE FRONT PANEL CONTROLS, SUPPLIED IR REMOTE OR FREE PC SOFTWARE TO CONTROL THE SWITCH.

FULL MATRIX CONTROL IS AVAILABLE ON THE INTERNAL WEBOs - SIMPLY PLUG THE MATRIX INTO THE NETWORK AND PUNCH IN THE DEFAULT IP (192.168.1.239) OR USE DHCP TO CONNECT TO A FULL CONTROL SYSTEM! THE WEBOs IS DESIGNED WITH MOBILE DEVICES IN MIND, SO FEEL FREE TO USE YOU PHONE OR TABLET FOR REAL-TIME CONTROL. THE FOUR INPUTS.

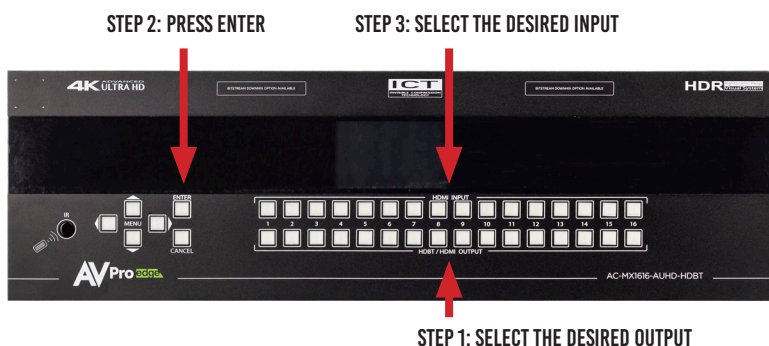
FRONT PANEL CONTROL

MAKE SETUP A BREEZE! THE FRONT PANEL ALLOWS YOU TO DO BASIC SETUP INCLUDING; EDID, AUDIO, MATRIXING AND NETWORK. ALL WITHOUT CONNECTING A PC OR HOOKING ANYTHING UP. THIS ADDITIONAL MODE OF CONTROL IS A WELCOME RESOURCE ON THE JOB SITE.WEBOS

SWITCHING:

THE AC-MX1616-AUHD-HDBT CAN BE SWITCHED FROM THE FRONT PANEL BY **SELECTING THE OUTPUT, PRESS ENTER, THEN SELECT THE INPUT:**

- 1.PRESS THE BUTTON (1 THROUGH 16) THAT CORRESPONDS WITH THE OUTPUT (DISPLAY, OR SINK DEVICE) YOU WOULD LIKE TO SEND A SOURCE.
- 2.PRESS ENTER
- 3.NOW SELECT THE DESIRED INPUT ON (1 THROUGH 16)
- 4.THE ROUTE IS NOW SET.
- 5.YOU MAY ALSO NAVIGATE TO THE "SWITCH" MENU ON THE CONTROL SCREEN TO MANAGE THE ROUTES



NAVIGATING THE CONTROL SCREEN:

YOU CAN USE THE CONTROL SCREEN TO SETUP/CONTROL SEVERAL KEY FEATURES INCLUDING:

- MATRIX SWITCH ROUTING** ~ CONTROL SWITCHING OR VIEW THE CURRENT ROUTING
- EDID MANAGEMENT** ~ VIEW AND ADJUST EDID CONFIGURATION
- AUDIO SETUP & ROUTING** ~ SET THE DEFAULT EXTRACTED AUDIO MODE TO BIND TO INPUT, BIND TO OUTPUT OR MATRIX - WHEN IN MATRIX, AUDIO ROUTE CAN BE SELECTED.
- NETWORK SETUP** ~ VIEW/SETUP IP ADDRESS (HOST/DEVICE, GATEWAY, SUBNET), TOGGLE DHCP, SET PORT NUMBER AND VIEW MAC ADDRESS

TO NAVIGATE THE CONTROL SCREEN YOU HAVE A 6-BUTTON CONTROL PANEL THAT CONTROLS THE "CONTROL" SCREEN.

- "MENU"** AREA CONSISTS OF UP, DOWN, LEFT AND RIGHT - THESE ARE YOUR NAVIGATION BUTTONS. PRESS THESE BUTTONS TO MOVE THROUGH THEM MENUS TO YOUR DESIRED SELECTIONS. YOUR DESIRED SELECTION WILL BE BORDERED OR HIGHLIGHTED
- "ENTER"** SELECTS THE HIGHLIGHTED ITEM AND ADVANCES TO THE NEXT SET OF OPTIONS OR SETS YOUR SELECTION
- "CANCEL"** STOPS WHAT YOU ARE DOING AND TAKES YOU BACK ONE MENU OR TO THE HOME SCREEN.

EDID MANAGEMENT: INSTANTLY AND EASILY SET AND MANAGE EDID FUNCTIONS RIGHT FROM THE FRONT SCREEN. EDID MANAGEMENT WILL HELP YOU GET THE RIGHT SIGNAL FROM THE SOURCE DEVICE ADDING ADDITIONAL SECURITY THAT NOTHING UNSUPPORTED WILL BE MISTAKENLY FED INTO THE SYSTEM.

TO SET THE EDID, JUST CHOOSE EDID FROM THE “HOME SCREEN” AND THEN SELECT THE INPUT YOU WANT TO SET. FINALLY TOGGLE THROUGH THE EDIDS UNTIL YOU GET THE ONE YOU WANT. FOR THE MOST PLUG AND PLAY COMPATIBILITY, WE RECOMMEND USING “1080P 2CH” (WHICH IS THE DEFAULT SETTING). THIS IS IDEAL FOR BARS, RESTAURANTS, AND HOMES. THERE IS ALSO THE ABILITY TO UPLOAD A CUSTOM EDID IS DESIRED (HAS TO BE DONE IN SERIAL CONTROL SOFTWARE).

AVAILABLE EDID OPTIONS ARE LISTED BELOW. ADDITIONALLY, YOU CAN COPY AN EDID FROM A DISPLAY USING SERIAL :

1.1080P_2CH	13.4K60HZ_3D_2CH	25.4K60HZY420_3D_2CH_HDR
2.1080P_6CH	14.4K60HZ_3D_6CH	26.4K60HZY420_3D_6CH_HDR
3.1080P_8CH	15.4K60HZ_3D_8CH	27.4K60HZY420_3D_8CH_HDR
4.1080P_3D_2CH	16.1080P_2CH_HDR	28.4K60HZ_3D_2CH_HDR
5.1080P_3D_6CH	17.1080P_6CH_HDR	29.4K60HZ_3D_6CH_HDR
6.1080P_3D_8CH	18.1080P_8CH_HDR	30.4K60HZ_3D_8CH_HDR
7.4K30HZ_3D_2CH	19.1080P_3D_2CH_HDR	31.USER EDID 1
8.4K30HZ_3D_6CH	20.1080P_3D_6CH_HDR	32.USER EDID 2
9.4K30HZ_3D_8CH	21.1080P_3D_8CH_HDR	33.USER EDID 3
10.4K60HZY420_3D_2CH	22.4K30HZ_3D_2CH_HDR	
11.4K60HZY420_3D_6CH	23.4K30HZ_3D_6CH_HDR	
12.4K60HZY420_3D_8CH	24.4K30HZ_3D_8CH_HDR	

CONTROL SCREEN - NETWORK (IP) SETTING: HERE YOU CAN SETUP THE MATRIX WITH YOUR PREFERRED NETWORK SETTINGS. FROM THE FRONT PANEL YOU CAN:

- VIEW THE CURRENT IP SETTINGS AND MAC ADDRESS
- SET STATIC ROUTE IP (DEFAULT IS 192.168.001.001)
- SET STATIC DEVICE IP (DEVICE DEFAULT IS 192.168.001.239)
- SET STATIC NET MASK (DEFAULT IS 255.255.255.0)
- CHANGE THE TCP/IP PORT (DEFAULT IS PORT 23)
- TOGGLE DHCP (DEFAULT CONDITION IS DHCP OFF) (0=OFF, 1=ON)

TO NAVIGATE THE IP SETTING SCREEN:

1. NAVIGATE UP AND DOWN TO SELECT (USE ENTER BUTTON) THE OPTION YOU WANT TO ADDRESS (RIP, IP, MASK, TCP/IP, DHCP)
2. ONCE SELECTED YOU CAN USE UP AND DOWN TO CHANGE THE FIRST NUMBER OR PRESS ENTER TO SKIP IT AND CONTINUE TO THE NEXT.
- 3.ONCE YOU SET THE LAST POSSIBLE NUMBER (OR COMPLETE THE IP) IT WILL BACK YOU TO THE MAIN SCREEN TO MAKE ANOTHER SELECTION

IR DETAILS: IR IN ON THIS MACHINE IS FOR CONTROLLING THE AC-MX1616-AUHD-HDBT, RS232 OR IP CONTROL ARE THE RECOMMENDED METHODS, BUT IR CAN BE USED IN SOME CIRCUMSTANCES. THE IR INPUT IS FOR AN IR RECEIVER EYE ONLY. THE IR RECEIVER EYE BELOW CAN PLUG INTO THE IR EXT. PORT.IR

1. USE THE SUPPLIED IR REMOTE AND SELECT THE OUTPUT THEN INPUT
2. LEARN IR CODES FROM THE SUPPLIED REMOTE
3. USE DISCREET NEC/HEX IR CODES TO PROGRAM A 3RD PARTY CONTROL SYSTEM OR IR REMOTE. CHECK WWW.AVPROEDGE.COM FOR DISCREET IR CODES, OR CONTACT US TO GET THEM.

TROUBLESHOOTING

- VERIFY POWER** - THE LCD SCREEN ON THE FRONT OF THE MATRIX SHOULD BE LIT UP WHEN POWER IS APPLIED. CHECK THAT BOTH POWER SUPPLIES ARE CONNECTED TO THE MATRIX AND POWERED
- VERIFY CONNECTIONS** - CHECK THAT ALL CABLES ARE PROPERLY CONNECTED
- ISSUES WITH ONE INPUT/OUTPUT** - SWAP PORTS/CABLES/ETC TO HELP NARROW DOWN IF THE ISSUE STAYS WITH THE INPUT/OUTPUT/ETC
- ISSUES WITH 4K BUT 1080P OR LESS IS WORKING**, VERIFY ALL CONNECTED DEVICES ARE CAPABLE OF THE SIGNAL YOU ARE SENDING

**HAVE A QUESTION OR NEED ASSISTANCE?
DON'T HESITATE TO CONTACT US!**

**SUPPORT: +1 605-274-6055
USA TOLL FREE: 877-886-5112
EMAIL: SUPPORT@AVPROEDGE.COM**

